

# Mobile Stage

M1



- Width 6.5m Height 3.5m Depth 4m
- Starting from £1300 per day at normal rate
- Weekend rate £1950
- Decking Width 6.5m Height 1m Depth 4m
- See our website for more information

[www.plrs.co.uk](http://www.plrs.co.uk)



# Mobile Stage

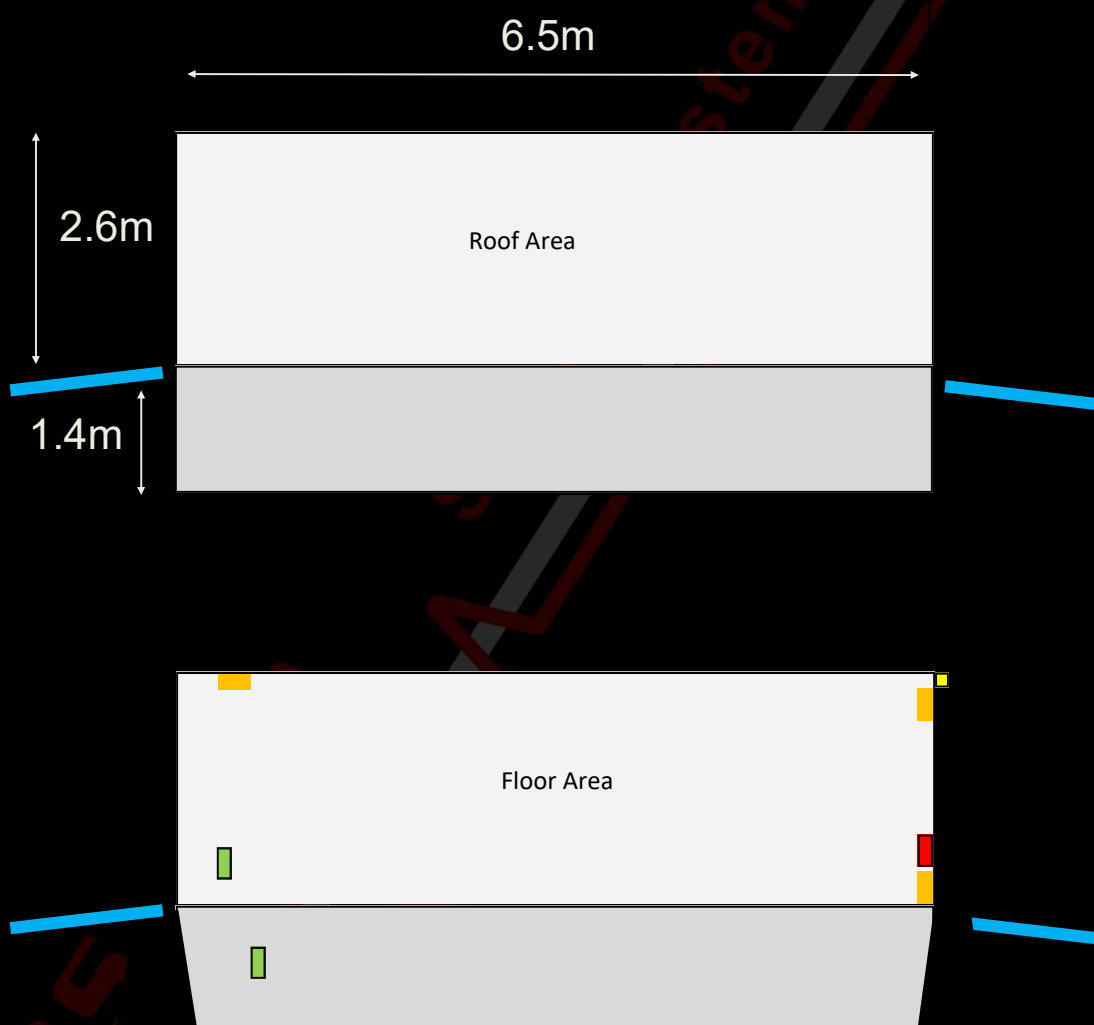
**M1**



## M1 Stage

Width	Depth	Height
6.5m	4m	3.5m
Decking		
6.5m	4m	1m
Advertising Wings (Banner not included)		
1.75m	0m	3m
Set Up / Breakdown (*When hired as part of package)		
Estimated Time	Free Days Prior*	Free Days After*
1 Hour	0	0

### Overhead View



#### M1 Stage

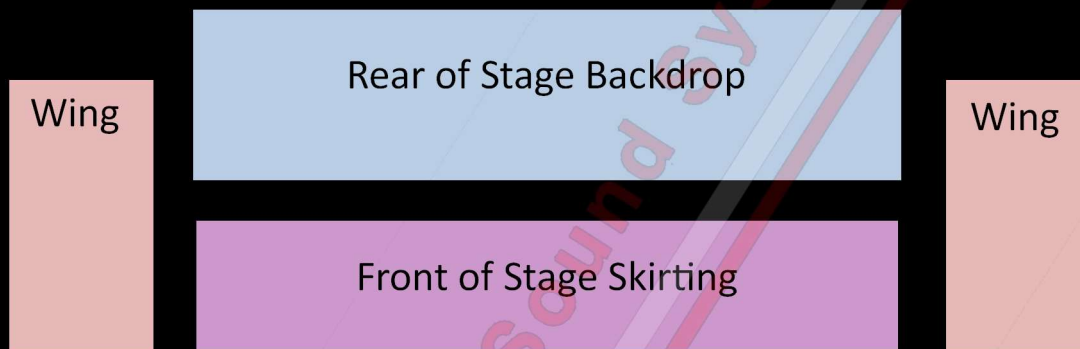
Orange	Internal Power Outlets
Yellow	External Power Input
Green	External Power Outlets
Red	RCD & Control Switches
Blue	Stage Wings

# Mobile Stage

**M1**

## M1 Stage Branding Options

Type	Height	Width	Fixing
Wing (x2)	3m	1.75m	Eyelets
Backdrop	2m	6m	Eyelets
Skirt	1m	4m	Top: Staples Bottom: Eyelets



		Mobile Stage (M1)		
		Stage Type	Basic	With Extra Truss
Wind Speed		Surface Area (m <sup>2</sup> )	42	72
		Mass (kg)	4000	4100
BF	mph	m/s		
3	8	3.6	0	0
3	10	4.5	0	0
3	12	5.4	0	0
4	14	6.3	0	0
4	16	7.2	0	0
5	18	8.0	0	0
5	20	8.9	0	0
5	22	9.8	0	0
5	24	10.7	0	0
6	26	11.6	0	0
6	28	12.5	0	0
6	30	13.4	0	0
7	32	14.3	0	0
7	34	15.2	0	0
7	36	16.1	0	0
7	38	17.0	0	0
8	40	17.9	0	0
8	42	18.8	0	0
8	44	19.7	0	0
8	46	20.6	0	0
9	48	21.5	0	0
9	50	22.4	0	0
9	52	23.2	0	0
9	54	24.1	0	0
10	56	25.0	0	0
10	58	25.9	0	217
10	60	26.8	0	520

### Action Levels and Required Actions

Action Level	Action
Green	Monitor wind speed at regular intervals
Yellow	Prepare to halt construction/performance until safe conditions have resumed.
Amber	Assess risk and instigate mitigation measures eg, removal of side wings Prepare for evacuation.
Red	Evacuate site. Do not return until conditions have improved. No one to approach stage until PLRS have assessed structural integrity.